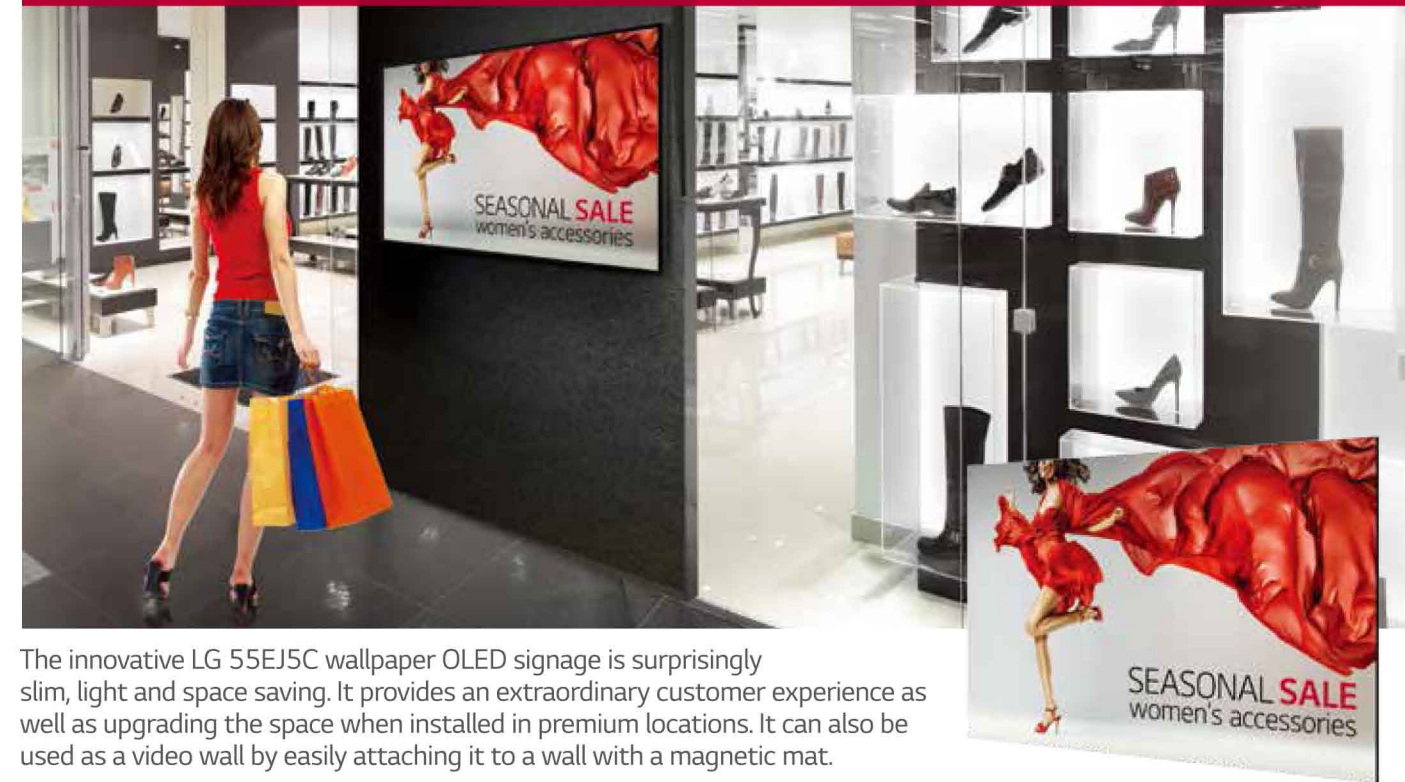


Artistic Space Beyond Display

55EJ5C wallpaper OLED signage



The innovative LG 55EJ5C wallpaper OLED signage is surprisingly slim, light and space saving. It provides an extraordinary customer experience as well as upgrading the space when installed in premium locations. It can also be used as a video wall by easily attaching it to a wall with a magnetic mat.



Why OLED Technology?

Perfect Black

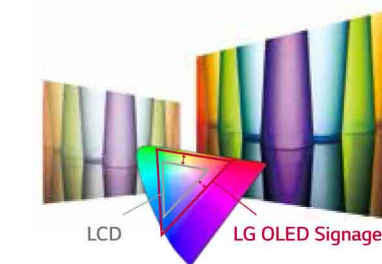
Limitless contrast and deepest black
Self-lighting pixels switch off completely to reproduce black. No light bleeding. Absolute black offers infinite contrast.



LCD LG OLED Signage

Perfect Color

Accurate & stable color reproduction
Self-lighting pixels bring colors to life with superb accuracy.



LCD LG OLED Signage

Perfect Viewing Screen

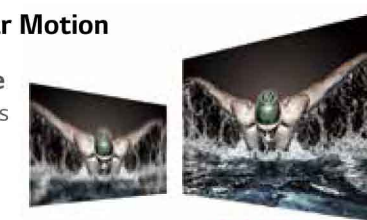
Wide viewing angle
LG OLED Signage delivers awe-inspiring picture quality across the entire screen, even from wide viewing angles.



LCD LG OLED Signage

Crisp, Clear Motion

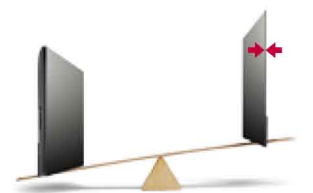
Faster response time
LG OLED Signage provides a 5,000-times faster motion-picture response time, for perfectly clear images without blurring.



LCD LG OLED Signage

Perfect Design

Slim and light
With just two layers, the LG OLED Signage display is unbelievably lightweight and thin.



LCD 86.5 mm 18.6 kg VS LG OLED Signage 3.65 mm* 12.6 Kg

* Edge depth

As a continuing policy of product development at LG Electronics, the design and specifications are subject to change. They may vary from model to model. Colour/shades may vary due to printing restrictions. E&OE.

Care Delight & LG Service

B2B CUSTOMER CARE
1800-180-9898 (Toll Free) | 5757554 (Send SMS)
www.lg.com/in/support

LG Service India Mobile App Available at Apple App Store & Google Play

www.facebook.com/lgindiapage | www.twitter.com/LGIndiaTweets

To know more about LG, visit www.lg.com/in
For B2B Solutions/Product enquiries, please write to b2b.solutions@lge.com
For B2B Service, please write to b2bsupport.india@lge.com

LG Greencycle
LG Supports A Green World
For more information visit www.lg.com/india/greencycle

Regd. Office: LG Electronics India Pvt. Ltd., A Wing (3rd Floor), D-3, District Center, Saket, New Delhi-110017

CIN No. U32107DL1997PTC220109



Artistic Space Beyond Display

55EJ5C wallpaper OLED signage



Screen Size
55

55EJ5C

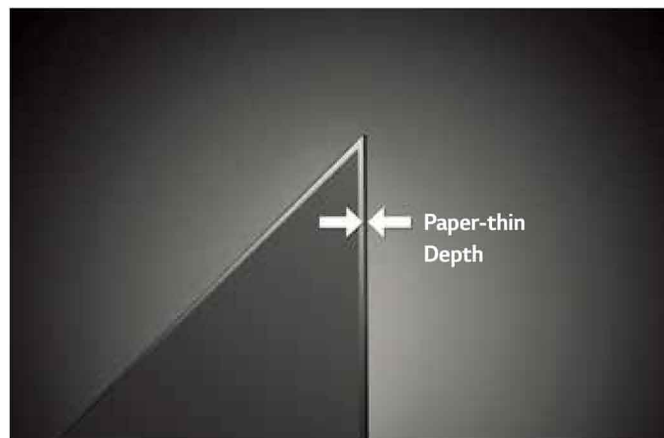
- Brightness : 400 cd/m²
- Bezel: 1.2 mm (Off bezel)
- Depth: 3.65 mm (Module)
- Interface: HDMI, DP, RS232C, RJ45, IR In, USB 3.0, USB 2.0
- SuperSign OLED/C



Key Features

Hide in Plain Sight

Its paper-thin depth gives the space an integrated look.



Paper-thin
Depth



Easy Installation & Video-Wall Tiling

As LG wallpaper OLED signage is extremely slim and light, it can be hung on the wall with dedicated slim brackets for video-wall usage.



Specifications

		55EJ5C
PANEL	Screen Size	55
	Panel Technology	OLED
	Aspect Ratio	16:9
	Native Resolution	1,920 x 1,080 (FHD)
	Brightness	400 cd/m ²
	Dynamic CR	100,000:1
	Viewing Angle (H x V)	178 x 178
	Response Time	1 ms (G to G), 8 ms (MPRT)
	Surface Treatment	Hard coating (2H), Anti-reflection treatment of the front polarizer (Reflectance typ. 1.0%)
	Life time (Typ.)	30,000 hrs
Operation Hours	18 hrs/7 days (Moving video only)	
Orientation	Portrait & Landscape	
CONNECTIVITY	Input	HDMI, DP
	Output	DP, Audio
	External Control	RS232C in/out, LAN in/out, IR Receiver, USB 2.0, USB 3.0
PHYSICAL SPECIFICATION	Bezel Color	Black
	Bezel Width	1.2, 1.2, 1.2, 1.2 mm (U, B, L, R *Offset bezel) 9.2, 12.4, 8.7, 8.7 mm (U, B, L, R *Onset bezel)
	Dimension (W x H x D)	Head: 1,227 x 702.1 x 3.65 mm, Signage Box: 420 x 230 x 75 mm
	Weight	Head: 5.5 kg, Signage Box: 5.3 kg, Wall Bracket: 1.8 kg
	Carton Dimensions (W x H x D)	1,383 x 834 x 252 mm
	Packed Weight	22.5 kg
SPECIAL FEATURES	Temperature Sensor, Cooling FAN, Source Selection, DPM Select, Energy Saving, Motion Eyecare, File Play with USB, Internal Memory (64 GB), Wi-Fi Dongle Ready, USB Cloning, Contents Scheduling, Local Time Auto Setting, Failover, SoftAP, BEACON, DP daisy chain	
ENVIRONMENT CONDITIONS	Operation Temperature	0°C to 40°C
	Operation Humidity	10% to 80%
POWER	Power Supply	100-240 V~, 50/60 Hz
	Power Type	Built-in Power
POWER CONSUMPTION	Typ.	190 W
	DPM	Less than 3 W
	Power off	Less than 0.5 W
STANDARD (CERTIFICATION)	Safety	UL/cUL/CB/TUV/KC
	EMC	FCC Class "A"/CE/KCC
	ErP	Yes
MEDIA PLAYER COMPATIBILITY	OPS-Type Compatible	Yes
	External Media Player Attachable	Yes
SOFTWARE COMPATIBILITY	SuperSign OLED	Yes
	SuperSign C	Yes
ACCESSORIES	Basic	Remote controller (includes 2 batteries), Cable (connection between screen and signage box), Power cord, DP cable, RS-232C cable, RS-232C gender, LAN cable, IR receiver, Manual (ESG, EIG), Wall-mount plate (includes screws), Harness locking cover, Set install guide
	Optional	Signage box bracket (U-Leg), FPC cable cover